

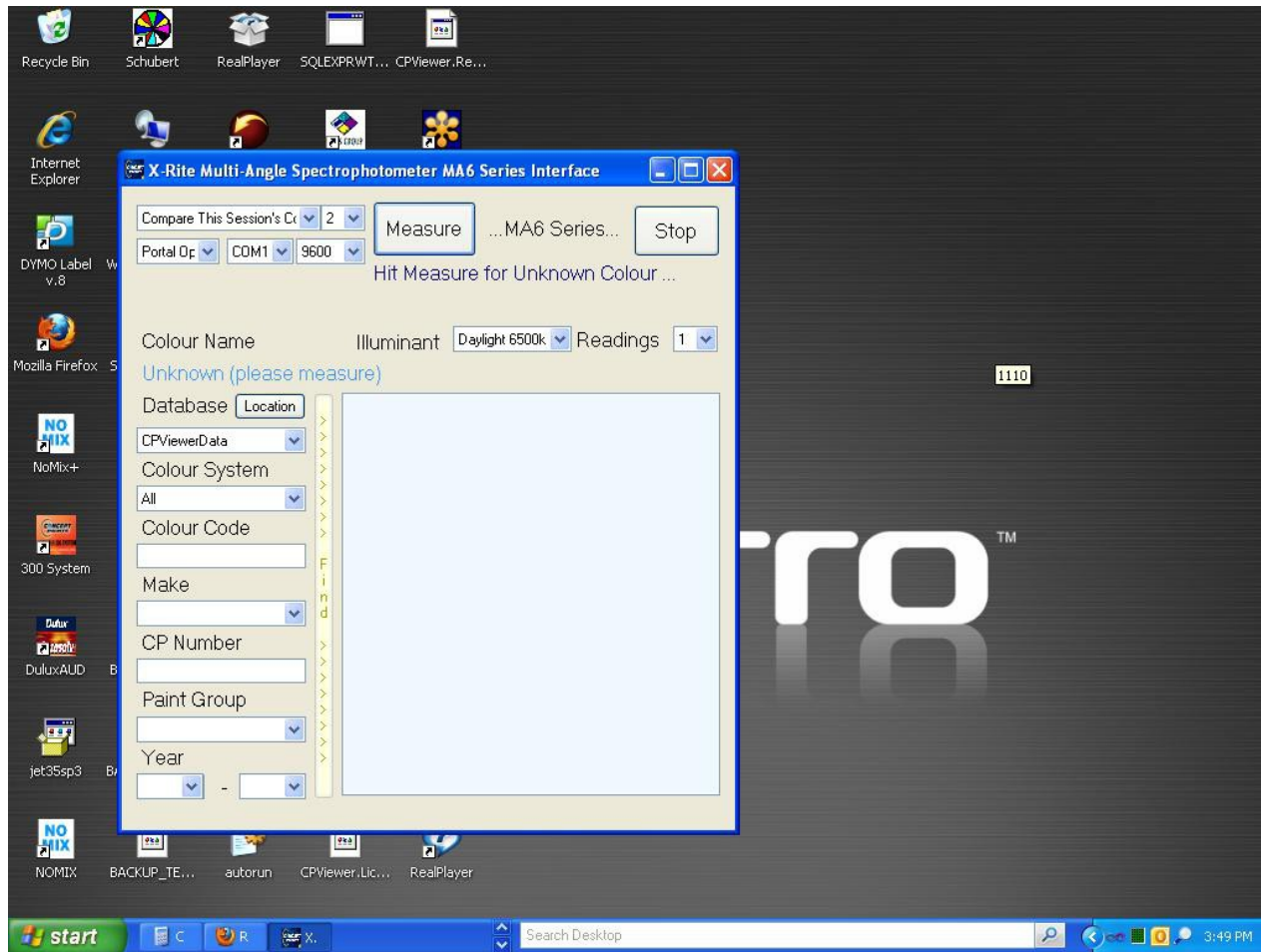
SpectroPhotometer Project

- Colour Match
- Tinter Details

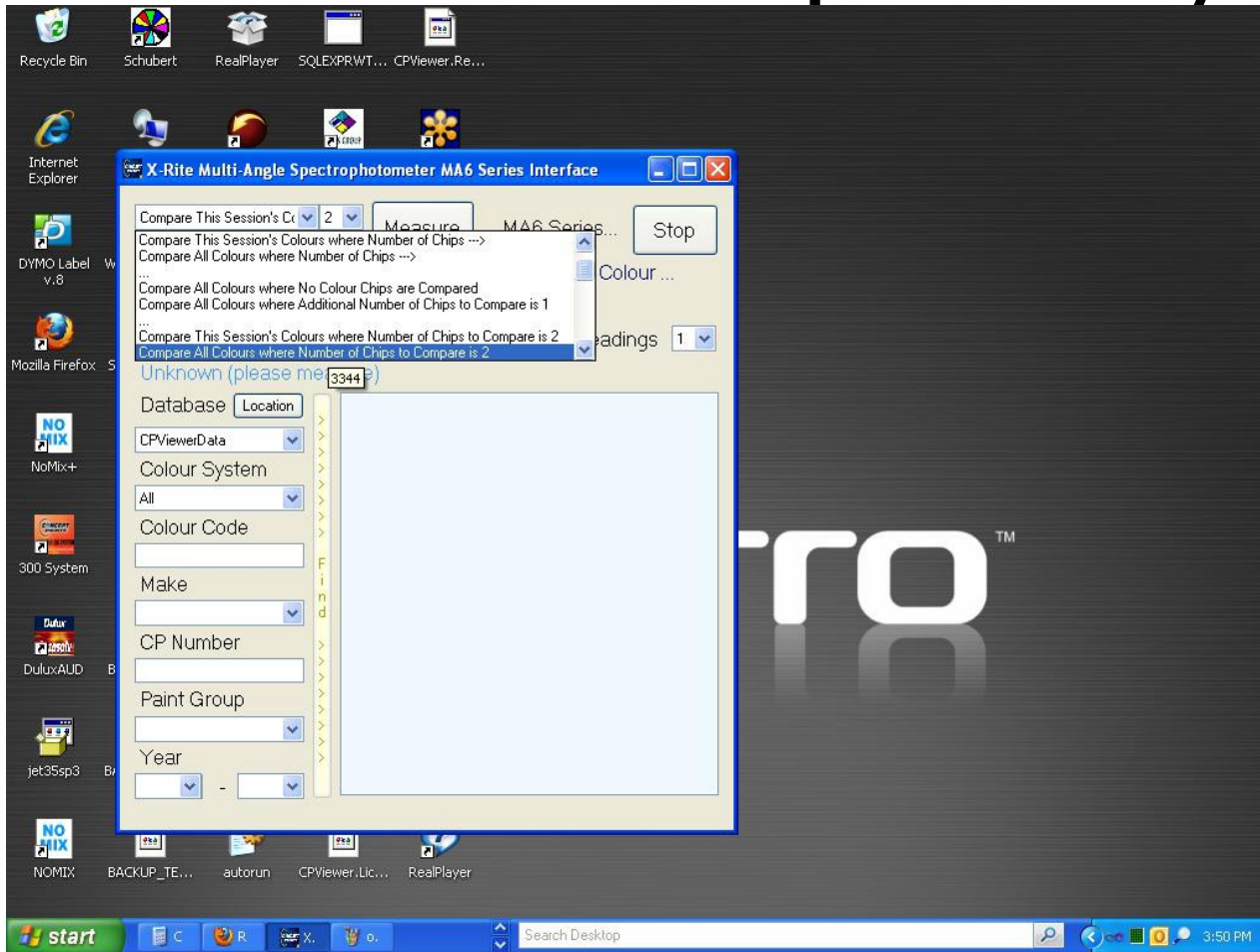
X-Rite MA68II SpectroPhotometer



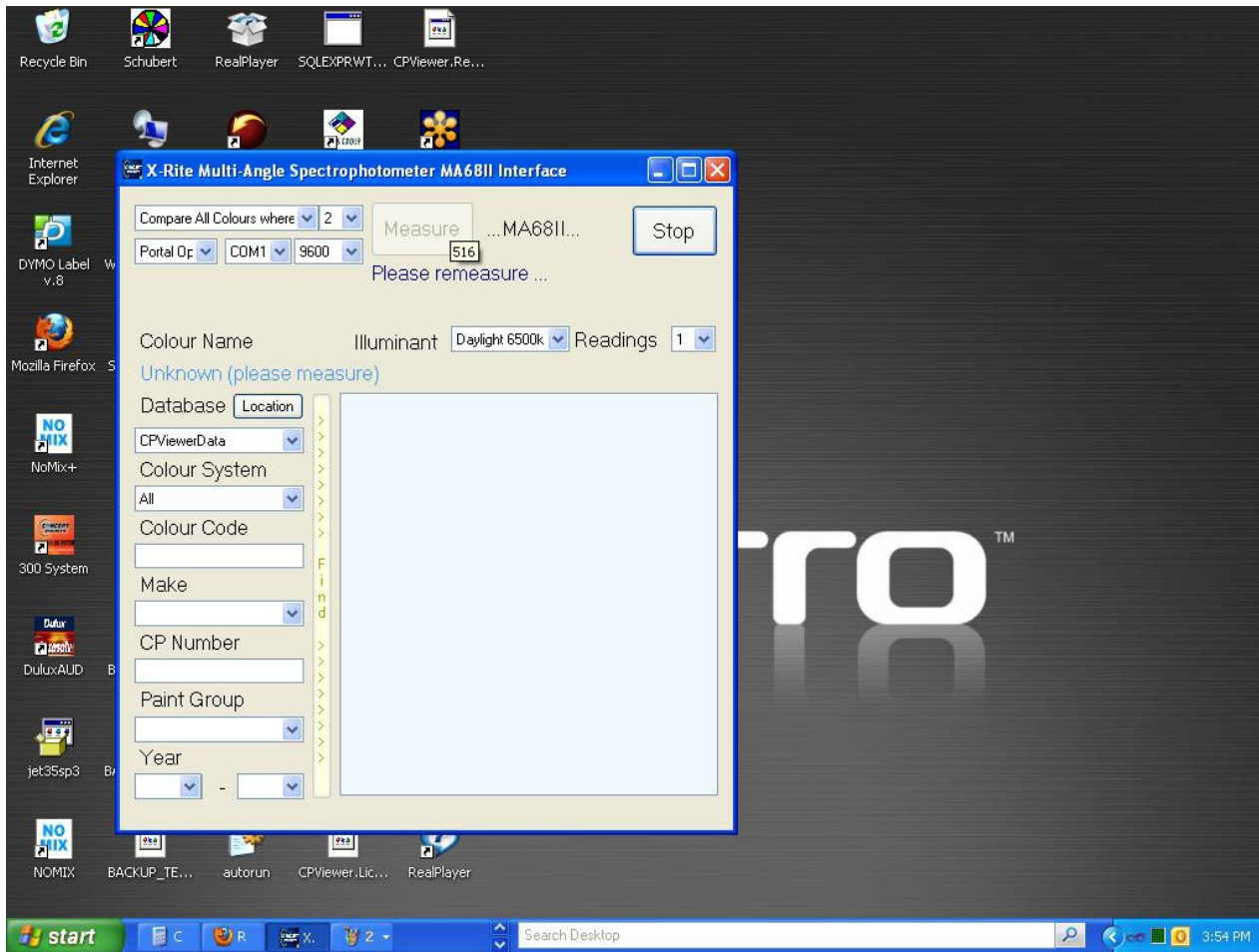
X-Rite SpectroPhotometer Interface



Colour Match via Local Database and Optionally 2



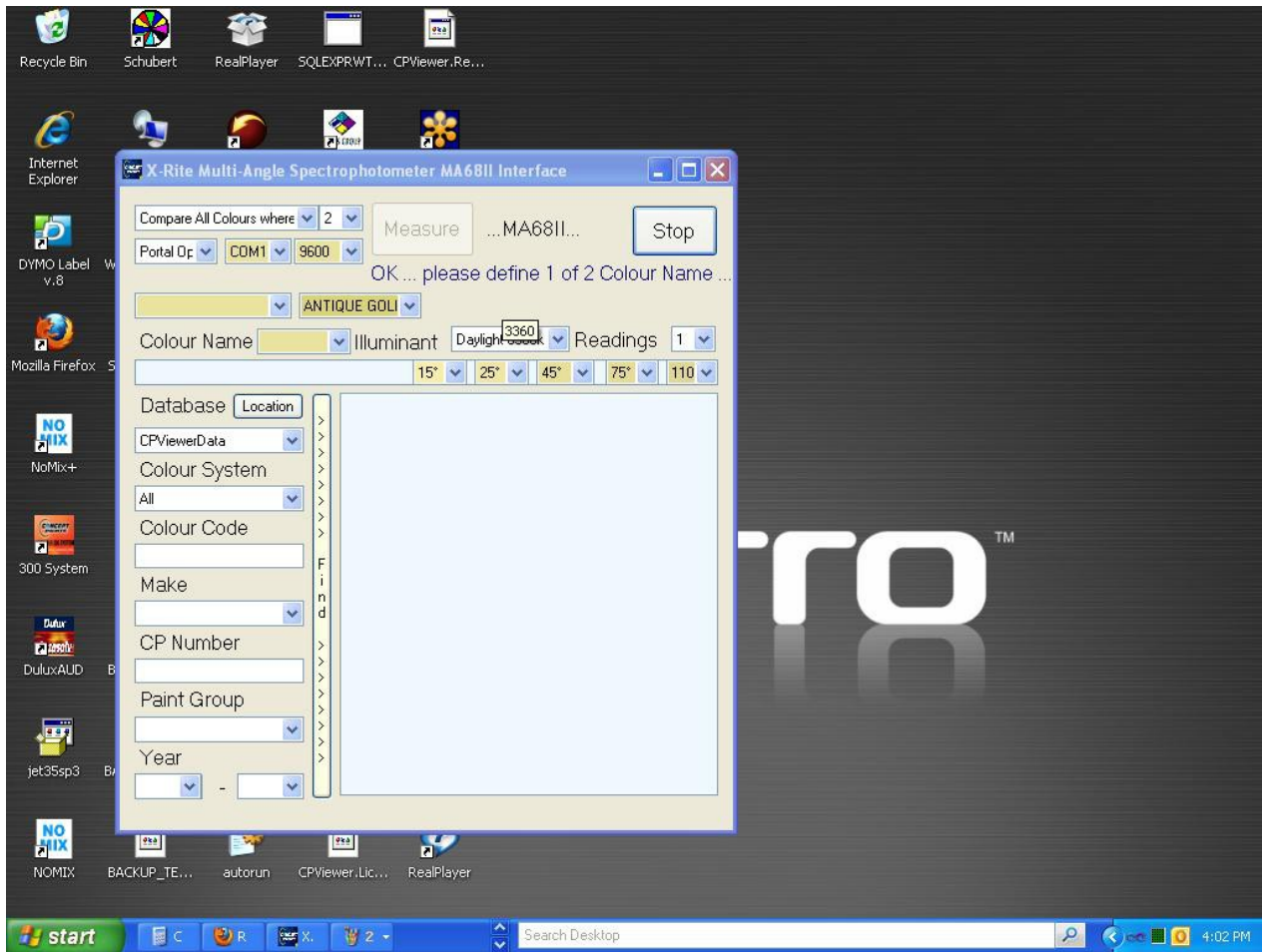
Hit the Measure button ...



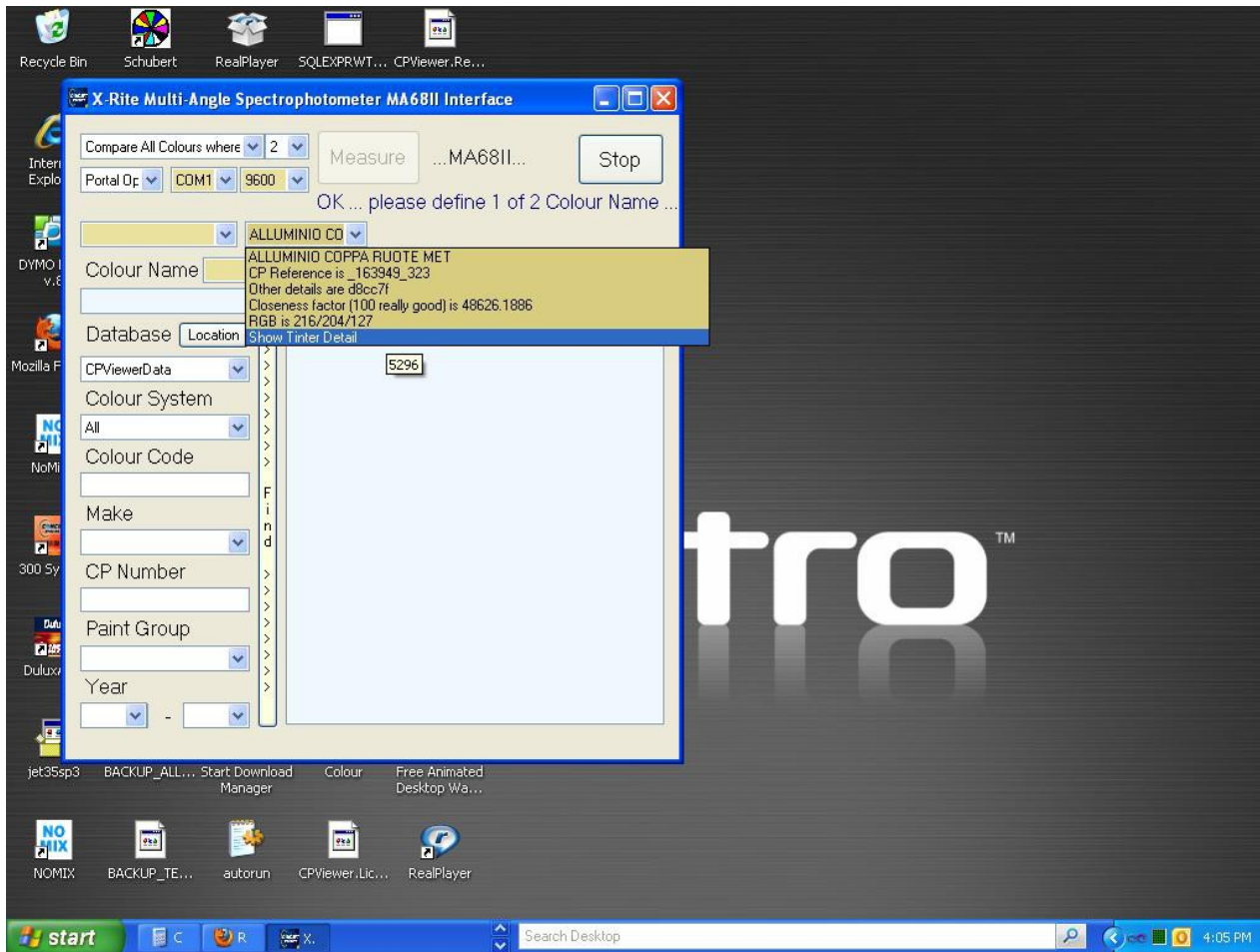
Measure Unknown Colour with SpectroPhotometer



Unknown Colour shown with Nearest Local Database Match



Options on Nearest Match include Tinter Details



This is the Way to Recreate this Colour

The screenshot shows the X-Rite Multi-Angle Spectrophotometer MA68II Interface software. The main window displays various settings for a color measurement, including 'Compare All Colours where 2', 'Portal Op COM1 9600', and 'Illuminant Daylight 6500k'. A 'Concept Paints Viewer - Colour Printout' window is open, showing the following details:

CP Number: 149627
Make: BENTLEY
Code: 9560107
Description: ANTIQUE GOLD MET
Paint Group:
CP Number: 149627
Year: 2003 - 2007
Quantity: 1 litre

Tinter	Weight (Act.)	Weight (Cum.)
971	634.2	634.2
907	127.6	761.8
968	95.5	857.3
996	76.8	934.1
931	27.1	961.2
910	16.6	977.8
933	6.5	984.3

The background features a large 'tro' logo with a trademark symbol.

End of Presentation